

# Features & Benefits

# Simpler Implants



simpler  




**Dear Colleague:**

I am the founder and developer of the **Simpler One Stop Implant System**. Like you, I am a dentist but I have been placing and restoring dental implants for over 40 years. Over those years, I have built my implant practice into a very large and profitable one. There have been a number of significant changes over that period and the learning curve for me was long, ongoing and sometimes painful. There is no need for you to go through the same learning curve. Unlike most other implant companies, **Simpler One Stop** realizes:

**"A successful implant practice requires much more than just a successful implant"**

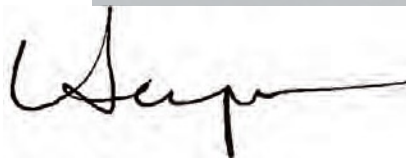
A **successful practice** in implant dentistry requires:

1. A **simple, easy to use, quality and cost effective implant** placement and restorative system.
2. **Clinical Training that will give you the confidence and competence** to place and restore the implant in real patients.
3. **Ongoing Clinical and technical support** from experienced clinicians when you need it.
4. **Support to market** your implant practice to the public.

**Simpler One Stop** has it all, the implant system, the training and the support. That is the basis of the

**Simpler One Stop System**. Let **Simpler One Stop** help you develop a successful and profitable implant practice. Phone us, you have nothing to lose and you just might be pleasantly surprised by a fresh approach to implant dentistry.

Sincerely;



Dr Harold Bergman, *DDS, Dipl OS&A, MScD(Path), MRCD(C)*

## Simpler Philosophy

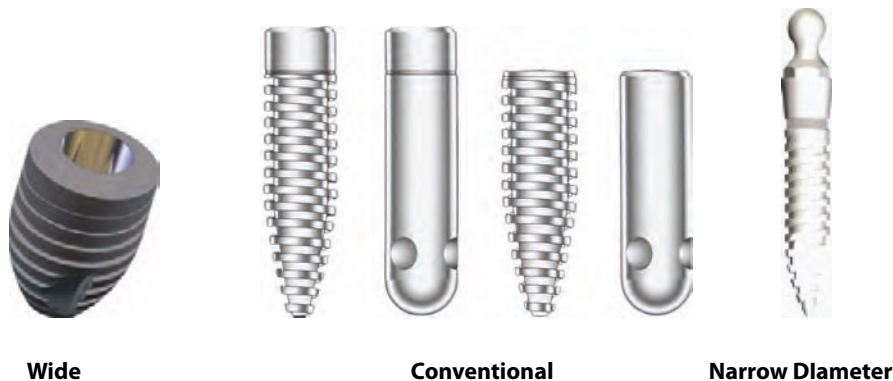
We want you to have a successful implant practice. *Simpler One Stop* firmly believes in the **Keeping Things Simple**. The product, training and support all have **Simplicity of Design**. Most current dental implant systems use a myriad of components and instruments in their design. This makes them expensive and difficult for the practitioner to learn and understand especially when ordering various components. *Simpler One Stop* was designed by a dentist for dentists. It uses **fewer components**, is **logically organized, easy to learn** and **well supported to** make understanding and its use **easier for the clinician**.



## The Implant Body

*Simpler Implant Bodies* are the most advanced, most comprehensive selection of implants in the world today. *Simpler* gives you choices in body shape, size and surfaces to fit any bone type or bone mass. The *Simpler Product* line offers:

- **Threaded** or **Push in Shape**
- **One Stage** or **Two Stage** or **Immediate Load**
- **HA Coated** or **Grit Blasted, Acid Etched**
- **Conventional, Wide** or **Narrow Diameter**



Wide

Conventional

Narrow Diameter

## Threaded or Push-in Shape

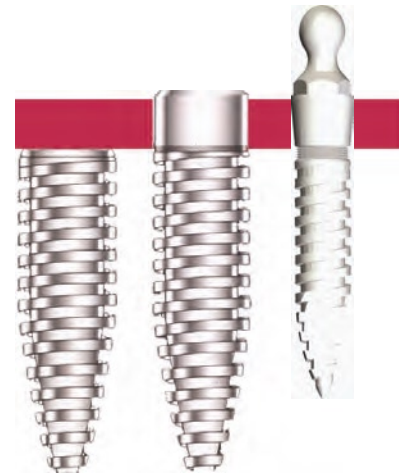
The two most common shapes for a dental implant are the **Push-in** and the **Externally Threaded**. Although the push-in implant is easier to place than a threaded, many dentists prefer a threaded implant as they feel it has better mechanical retention than a push-in.

*Simpler Implants* are available in both the **Push-in** and **Threaded Shapes**.

## One or Two stage or Immediate Load

The tops of implants are placed either flush with the top of the bone (**Two Stage**) where they have little or no loading during healing, flush with the top of the oral mucosa (**One Stage**) where they have minimal loading or **Immediately Loaded** where they have more loading. There are some advantages to the One Stage implant such as the elimination of joint at the crest of the bone, the preservation of a keratinized attachment surrounding the implant and reduced trauma to the patient. Narrow Diameter implants are becoming more successful and popular.

*Simpler Implants* are available in **One Stage** and **Two Stage** and **Narrow Diameter Immediate Load**



Two Stage One Stage Immediate Load

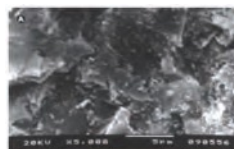
## Surface: Hydroxylapatite (HA) or Titanium Grit Blasted, Acid Etch Surface

Almost all machined implants today are treated with grit blasting and acid etching. This process increases the macro-surface and the micro-surface area. Many clinicians and authors feel and numerous articles state that an HA coating over the bead blasted, acid etched surface gives the implant a **quicker and stronger bond to bone** than that found with a solely grit blasted and acid etched surface.

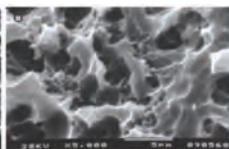
*Simpler Implants* are available in both **HA Coated** and **Uncoated Bead Blasted, Acid Etched Surfaces**.



Machined



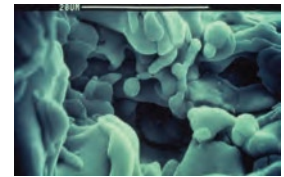
Bead Blasted



Acid Etched



HA Coated



High Power HA

Figure 4. SEM micrograph of the ceramic surface abraded with 30 µm silica oxide particles ( $\times 50000$ ) (A). SEM micrograph of the ceramic surface etched with 1% hydrofluoric acid for 2 min ( $\times 50000$ ) (B).

## Dual Coatings

Some critics of HA coating suggest that the coatings can come off. While there is very little scientific evidence that this occurs, *Simpler Push-in* and *Simpler One Push-in Implants* both have a micro-porous, dual layered, plasma sprayed coating unlike most other HA coated implants which only have a single coating. This dual coating significantly increases the shear strength of the *Simpler* coatings well in excess of competitive coated implants.



Only *Simpler implants* have this **Dual Coating**

### Conventional, Wide or Narrow Diameter

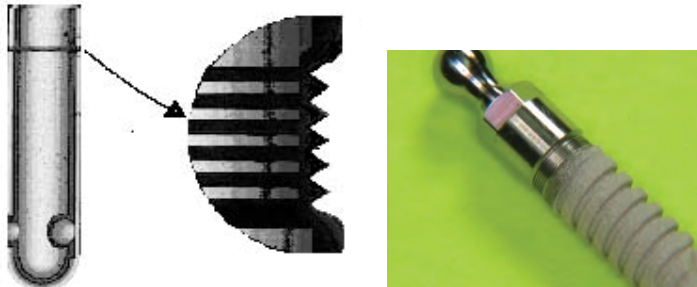
The available height and width of the bone of edentulous jaws varies considerable from patient to patient and between different areas of the mouth. That is why the diameter of implants vary from below 2.5 mm through to 6 mms and the lengths cover a range from 6 mm to 18 mm or more. The clinician should place the longest, widest diameter implant in the available bone.

**Simpler** is available in diameters of 2.5, 3.25, 4.0, 5.0 and 6.0 mm and lengths from 6, 8, 10, 13, 15 and 18 mm.

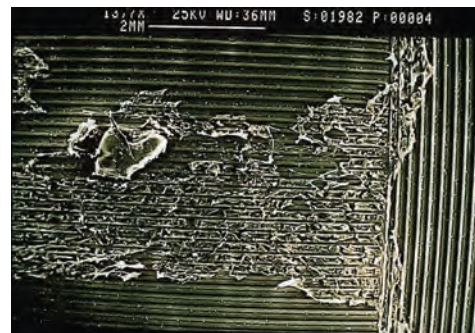
### Microgroove Tissue Guidance Collar

All **Simpler One Stage** and **Narrow Diameter** implants have an exclusive, patented **Microgroove Tissue Guidance Collar** making them the only implants in the world with this tissue guidance feature. These horizontally placed microgrooves about the neck of an implant improve the performance of implants by significantly impeding epithelial or soft tissue down-growth.

Only **Simpler** implants have this **Microgroove Collar**.



Simpler Push in with Microgroove Collar



In vitro slide showing epithelial cells growing along grooves as opposed to crossing them.

### Morse Taper Mating Surface

All two-piece **Simpler** implants have the more technically secure Morse Taper mating surface. The **Morse Taper** mating surface eliminates the “gap” and the micro-movement between the abutment and the body of the implant found with the more traditional hex type mating surfaces. This feature eliminates the production of toxic by-products produced in this gap which in turn attack the surrounding bone and soft tissue.

**Simpler** is a pioneer in **Morse Taper mating surfaces**.

Morse Taper eliminates “micro-gap” and the micro-movement between the abutment and the body of the implant.



## Platform switching

“Platform Switching” is really a misnomer. It has come to mean using an abutment which is smaller in diameter than the diameter of the implant. However it is much more than that. Recent scientific articles are showing that if:

1. The diameter of the emerging cover screw, abutment, etc. is smaller in diameter than the diameter of the implant, and
2. The top of the implant is buried below the crest of the ridge at time of placement,

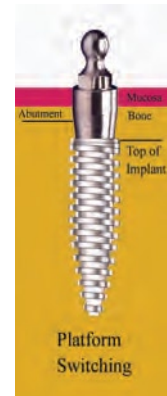
The bone will grow over the top of the implant and around the cover screw/abutment forming a bony biological seal to prevent epithelial migration down the neck of the implant/abutment. Platform switching needs to have both.

Once the bone seal is established and if this bony seal is:

1. Not disturbed during prosthetic restoration, and
2. Not subject to overloading or peri-implant infection such as that found with the micro-gap between implant and abutment of the traditional internal and external mating surfaces,

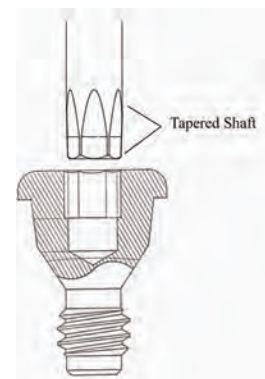
Then the seal will be maintained and crestal bone loss is prevented.

*Platform Switching shows the Simpler Implant has the requirements of being smaller in diameter than the diameter of the implant & buried below the crest of the ridge to establish the bony seal. It is recommended to bury the Simpler Implant as much as 2 mm below the crest of the ridge to take advantage of this feature*



## Tapered Internal Hex Alan Key

All **Simpler** screws have a 1.3 mm (.050") hexagonal screw hole. Due to machining tolerances found with all manufactured metal components, the male internal hex drivers are all made slightly smaller in size than the female internal hex screw holes. As a result, all internal hex drivers fit loosely into the screw. To prevent the screw from falling off the internal hex driver, all **Simpler Internal Hex Drivers** and **Alan Keys** are available with a Tapered Head. This feature ensures the driver fits snugly into the screw head



## Square Threads

All *Simpler Threaded implants* have a square shaped thread compared to most threaded implants which have a "V" shaped configuration in cross section. The square thread has an increased total load bearing surface area, an increased lateral load bearing surface and an increased compressive load bearing surface area than the "V" shaped cross section. As a result, the square thread reduces lateral and vertical loading to the supporting bone especially at the crest of the bone.

*Simpler Threaded Implants* are only available with **Square Threads**.



## Packaging

All implants are double vialled, tamper proof and gamma radiated for sterility. The implants are further tested for sterility by three different accepted methods. Simpler Implants has strived to provide safe, cost effective packaging while being strongly aware of the environmental impact. There are no unnecessary redundant components to its packaging. We are the **GREENEST** packaged implant on the market.



## Quality Control

Simpler Implants Inc. serves the North American and European markets with ISO 13485: 2003 quality control, CE designation for the European market, FDA approvals in the US and is approved in Canada by the Health Canada; these are the highest quality control standards available in the world.

Simpler Implants have been used by clinicians successfully for over 22 years, longer than most implants systems available today. *Simpler* has **ISO 13485: 2003** quality control, **FDA** approvals in the USA, approved in Canada by the **Health Canada** and has its European **CE mark**.

*Simpler* has the highest quality control standards available in the world.



## Toadstool Mini Implants and Abutments

Soft Tissue Supported Overdentures retained by implants are NOT supposed to “rock”. By its very definition the support for a Soft Tissue Supported Overdenture is supposed to come entirely from the soft tissue, not from the implants. The function of the implant is to prevent vertical dislocation of the denture and prevent the denture from moving laterally. An overdenture that “rocks” on an implant means that the implant is taking all the vertical loading. One, two, three or four implants retaining an overdenture are not designed to take all this load. If “rocking” is not corrected, cervical bone loss and eventual failure of the implant will result.

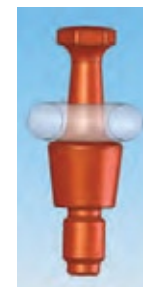
Although O Ring abutments attached to rubber O rings are a better designed to absorb stresses in there is an inherent resiliency with the rubber ring, they still have an absolute predetermined distance measured from the bottom of the rubber ring to the top of the hex portion of the abutment. When compressed the rubber ring compresses but eventually allows full loading on the implant. The rubber reduces the load but does not eliminate it if the denture settles significantly.

The new Simpler Toadstool™ Mini Implants and abutments virtually eliminate all vertical loading. This design incorporates a rubber O ring into the denture base for resiliency as well as provides an elongated abutment neck to allow the rubber ring to move apically with the denture without loading the implant. Support is always maintained by the soft tissue and not the implant.

By redesigning the attachment portion, the Simpler Toadstool™ abutment has the Lowest Profile for Soft Tissue Supported Overdenture abutments on the market today measuring 0.097” from the mucosa to the top of the Locator attachment.

The features of Lower Profile, Platform Switching, Tissue Guidance and HA Coating cannot be found with any other Narrow Diameter implant. When combined together, the Simpler Toadstool™ Narrow Diameter Implant offers the best chance of successful short and long term osseointegration with the least amount of potential crestal bone loss.

The feature of Virtual Elimination of Vertical Loading on the implant is unique amongst all implants. The Simpler Toadstool™ Narrow Diameter Implant and abutments are the culmination and combination of many proven, patented features and are simply the next generation of attachment for Soft Tissue Supported Overdentures.



## Distance Academic Training

*Implant Resource Center (IRC)* is the exclusive provider of distance training in implant dentistry to *Simpler One Stop*. The *IRC* offers the most comprehensive, distance learning, implant training program available today. It consists of 15 Modules complete with DVD and examination covering all aspects of implant dentistry. This program is **ADA CERP** approved for 5 CE credits per module for a total of 75 CE credits. Go to [www.implantresourcecenter.com](http://www.implantresourcecenter.com) for more details.

Only *Simpler* offers **ADA CERP approved 15 Module Distance Training**.



## Clinical Training

*Simpler* offers personalized, "one-on-one", hands on training in the dentist's office on their own live patients.

Only *Simpler* offers this **ADA CERP approved Personalized Clinical Training**



## Clinical, Technical and Marketing Support

At all times you have access to someone knowledgeable and experienced in implant dentistry and the *Simpler One Stop* system to give you immediate answers to any problem you might encounter. *Simpler One Stop* offers several programs, literature and advice from qualified personnel to help you find patients both within your practice and without.

Only *Simpler* offers this exclusive **Personalized Clinical, Technical and Marketing Support**.

## Simpler Implants

404-1023 Wolfe Ave  
Vancouver, BC

1-800-565-3559

